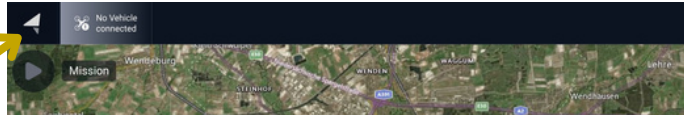


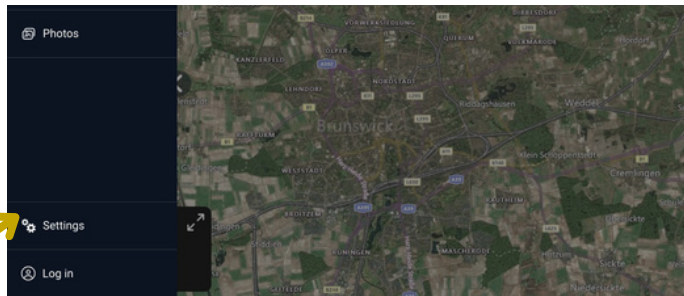
Offline maps

Since the Herelink often cannot be connected via a mobile hotspot but only via a classic Wi-Fi network, it is recommended to download offline maps for use in the field.

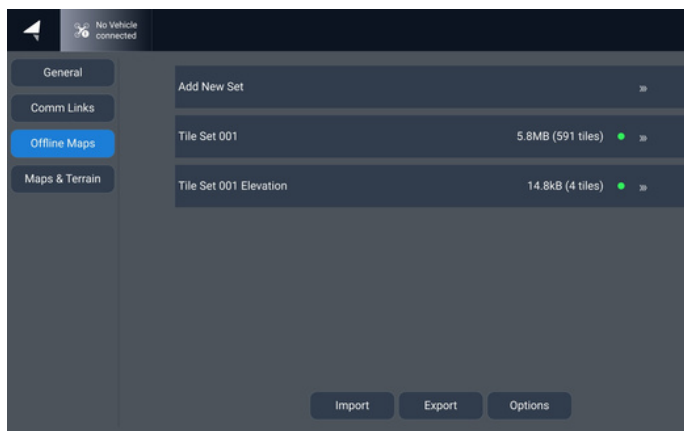
1. Tap the menu icon in the top left corner.



2. Select Settings.



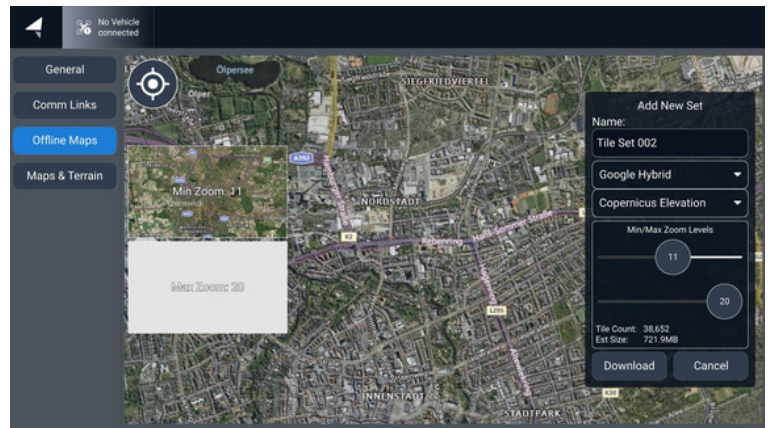
3. Under Offline Maps, click Add New Set.



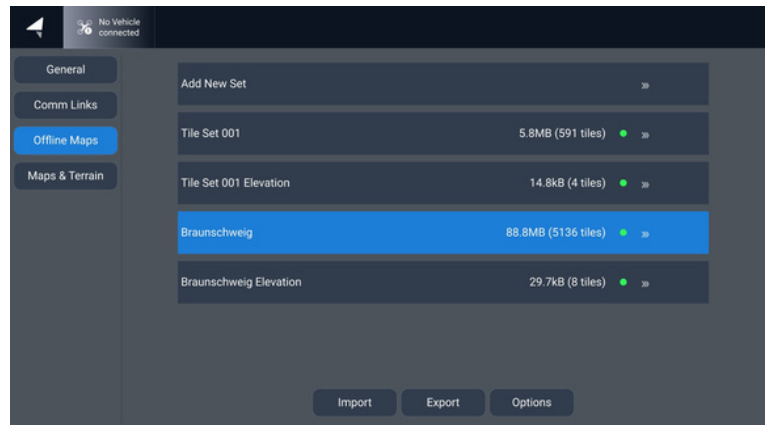
4. Now select the desired map section.

We recommend the following map types:
Google Hybrid, Google Satellite, Google Terrain

- Under Elevation: Copernicus Elevation
- Set the desired zoom levels (min/max)
- Give the card set a meaningful name



5. The map material will now be downloaded and will appear in the list of offline maps. The map is now ready for use and will be used automatically when there is no online connection.



Notes on problems:

AMC offers various map layers. If your offline map isn't displayed even though you're in the correct area, please check the following steps:

Open the map tools (card tools).

Tap Map Layers (card layer).

Make sure the correct layer (e.g. Google Hybrid) is enabled.

If you need the street map in addition to the satellite image, repeat steps 3 to 5 and select the appropriate map type.

